

Orange County Public Schools



WINNER

the broad prize
for urban education



Traffic Management and Safety

January 15, 2015

Agenda

- Background
- SafeWalk Program
- Facilities Planning
- Community Partnerships
- Strategies

Background

- In 2012, OCPS staff were directed to expand work on safe walking for students and assist with traffic congestion around schools
 - OCPS School Board agreed to extend the hazardous-walking criteria for middle and high school students
 - FS 1006.21 – Duties of district school superintendent and district school board regarding transportation
 - FS 1006.23 – Hazardous walking conditions
 - ✓ Determines criteria/requirements for transportation services
 - ✓ Does not focus on education or training

Background

- Current level of hazardous transportation services
 - 816 eligible students representing 24 elementary schools
 - 195 eligible students representing 8 middle schools
 - 120 eligible students representing 4 high schools

Background

- Data from past 3 school years (2011-2014)
 - Middle and high school-aged students represent 74% of pedestrian crashes
 - Approximately 53% occurred in an appropriate pedestrian crossing
 - In approximately 49% of pedestrian crashes, the pedestrian followed the appropriate rules of the road

Background

- Causal factors of preventable pedestrian crashes include:
 - Distracted walking (cell phone)
 - Head phones
 - Horseplay
 - Not checking for traffic
 - Skateboard/bike
 - Vision obstructed by clothing

Background

- In 2014, OCPS School Board workshop was conducted
 - Presentation centered on the current status of traffic management and safety
 - Board provided direction to place additional focus on traffic management and safety
 - SafeWalk Program was created to align with Board direction

SafeWalk Program

- Goal is to enhance the safety of students commuting to and from school by foot or other non-motorized methods
 - Employ cross-functional governance model to develop strategy and provide oversight
 - Utilize data to support programmatic decision-making
 - Promote collaboration between the district, its schools and community partners
 - Use awareness programming and training to support program
 - Integrate facilities planning and government relations into solution

SafeWalk Program

- Governance Structure
 - Enterprise
 - Strategy, policy and direction
 - Tactical
 - Implementation, programming and operations
 - Serves as central point of contact for traffic management and safety issues

SafeWalk Program

- Governance Committee Membership
 - Curriculum and Instruction
 - Facilities Services Planning and Design
 - Planning, Governmental and Labor Relations
 - Emergency Management, Safety and Security
 - Transportation Services

SafeWalk Program

- Start of school year programming
 - Planning and communications regarding traffic management and safety
 - Close coordination with schools in monitoring known and emerging traffic challenges
 - On-site technical support during first two weeks of school to manage through known and emerging traffic challenges

SafeWalk Program

- Awareness and educational materials
 - “Are We There Yet” brochure
 - Posters
 - YouTube link for schools to access pedestrian safety videos for use during morning announcements
- Crossing Guard Program
 - Monitoring of crossing guard programs, and coordination with external agencies to address vacancies and assess staff placement
- Law Enforcement Traffic Control and Enforcement
 - Regular engagements to address traffic flow and safety

SafeWalk Program

- Public Works and Traffic Departments
 - Coordination of traffic management solutions
- UCF Road Safety Audits
 - 4 in 2014 (i.e., Waterford Lakes ES, Lake Silver ES, Spring Lake ES and Shingle Creek ES)
 - Shared with partner agencies (i.e., law enforcement, public works, traffic engineers, etc.)
 - 5 in 2015
- Safety Equipment and Training
 - Safety vests, stop paddles, cones, etc., provided to schools
 - Technical assistance and training provided to school staff

SafeWalk Program

- SafeWalk Collaboration Site
 - Submit arrival/dismissal plans for review
 - Promote information sharing to establish best practices for arrival/dismissal plans
- Annual Pedestrian Infrastructure Assessment
 - Integrated into the Annual Comprehensive Facility Inspections process
 - Assesses environmental conditions relating to pedestrian and traffic safety, and makes recommendations for improvements

SafeWalk Program

- Programming
 - Walking School Bus
 - Walk-N-Roll
 - Walk Safe
 - Implemented University of Miami's K-1, 2-3 and 4-5 *Walk Safe* curriculum that satisfies Florida Standards for Health Education, Physical Education and Visual Arts in at least 27 schools
 - International Walk to School Day
 - 50 schools participated on October 8, 2014

SafeWalk Program

- Programming
 - Florida Traffic and Bicycle Safety Education Program - Bicycle, Helmet, and Pedestrian Safety Education Training
 - 150 elementary physical education teachers trained
 - Elementary Bicycle Safety Curriculum
 - Will be implemented prior to National Bike to School Day on May 6, 2015

SafeWalk Program

- Community Involvement
 - Orange County Student/Pedestrian Safety Committee
 - Local committee consisting of county and local governments to review and address pedestrian issues affecting students
 - Orange County Community Traffic Safety Team
 - Local committee consists of state and local agencies to review and address traffic safety and pedestrian issues through education, engineering, and enforcement

SafeWalk Program

- Community Involvement
 - MetroPlan Orlando
 - Metropolitan planning organization (MPO) for Orange, Osceola and Seminole Counties.
 - Provides the forum for local elected officials, their staff, citizens, and industry experts to work together to improve transportation in Central Florida
 - ✓ Transportation Technical Committee
 - ✓ Bicycle/Pedestrian Advisory Committee
 - ✓ Transportation Disadvantaged Local Coordinating Board

SafeWalk Program

- Community Involvement
 - Community Traffic Safety Team (CTST)
 - Takes a comprehensive multi-disciplinary approach to safety
 - ✓ Engineering
 - ✓ Enforcement
 - ✓ Education
 - ✓ Emergency Services
 - Seeks to reduce the number of traffic crashes, the number of traffic-related fatalities, and the number and severity of injuries that result from traffic crashes

SafeWalk Program

Community Traffic Safety Team

- ✓ SafeKids/Children's Safety Village
- ✓ City of Orlando Traffic Engineering
- ✓ Orange County Traffic Engineering
- ✓ Orange County Sheriff's Office – School Crossing Guard Unit
- ✓ Winter Park Police Department
- ✓ Winter Park Traffic Engineering
- ✓ OCPS Transportation
- ✓ OCPS Planning and Government Relations
- ✓ OCPS EM/Safety/Security
- ✓ Orlando Police Department
- ✓ Orlando Police Department – School Crossing Guard Unit
- ✓ Orange County Drug-Free Office
- ✓ Florida Department of Transportation
- ✓ East Central Florida Regional Planning Council
- ✓ LYNX Safety and Security
- ✓ Best Foot Forward
- ✓ Florida Highway Patrol

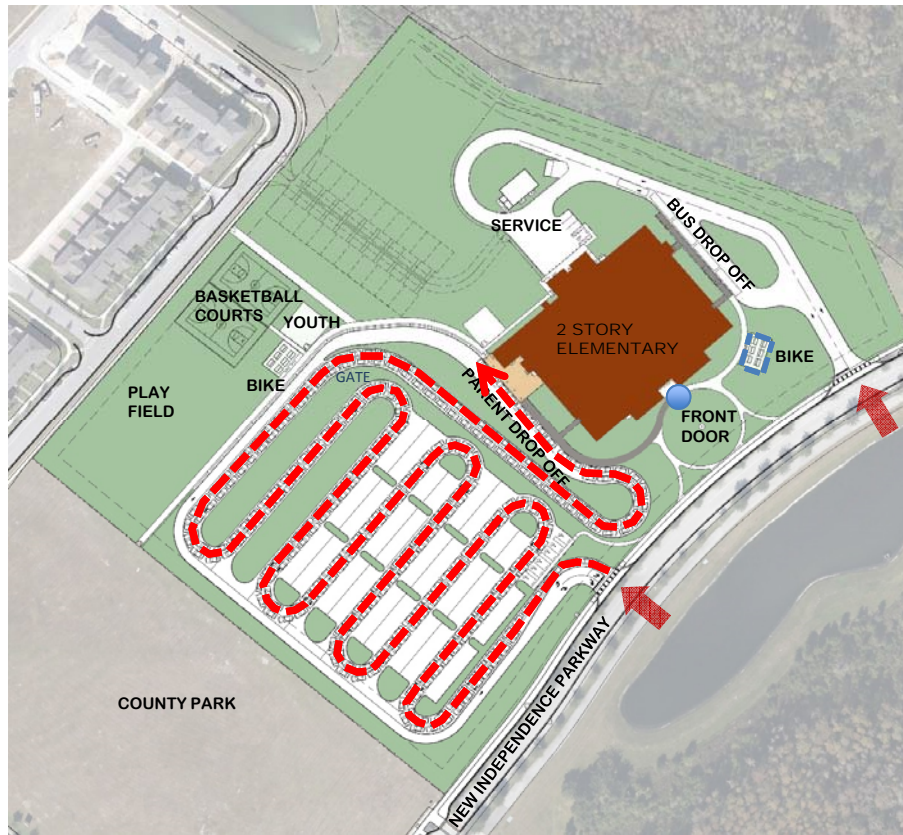
SafeWalk Program

- Community Involvement
 - East Central Florida Regional Planning Council – Safe Routes to School Program
 - National program that creates safe, walkable routes to schools, that helps to connect communities by making them safe, healthy and desirable. It is sustained on the local level by schools, community leaders, and local, state, and federal governments.
 - Best Foot Forward
 - Best Foot Forward is a coalition of elected officials, civic leaders, public safety professionals, educators, transportation planners, officers, doctors, nurses, entrepreneurs, and concerned citizens joined together to improve pedestrian safety.

Facilities Planning

- Developed parent-loop survey procedures for schools
- Created a collaboration site for schools to upload parent loop survey forms
- Modified OCPS Design Guidelines for 2014 increasing parent queuing areas from a minimum of 15% up to 20% of total students
- Pedestrian traffic studies will be included during Phase 1 Schematic Design Submittals for all school projects and others as directed
- Partners with Safety, Fire and Health Compliance to identify appropriate use of capital improvements safety funds to enhance the traffic safety environment

Orange County Public Schools



Data

832 student stations
82,013 square feet

Cars

254 parking spaces
337 car on-site stacking

Buses

25 Bus Stacking



Data

832 student stations
97,225 square feet

Cars

131 parking spaces
132 on-site car stacking

Buses

15 Bus Stacking

Community Partnerships

- Local Traffic Engineering Departments reviewed traffic patterns around schools upon request
- Local Traffic Engineering Departments have made appropriate changes to signage or timing to traffic signals at or near schools
- Local law enforcement has provided technical assistance and traffic enforcement
- School Resource Officers are assisting schools in managing traffic issues
- Facilities coordinates with local governments on OCPS facility improvements

Programs and Strategies

- Community Targeted Strategies
 - Promote pedestrian safety through DMV/Tax Collector's offices
 - Promote the reporting of hazardous environmental conditions to mitigate risks
 - Orange County 3-1-1
 - MetroPlan Orlando's "Pedestrian Spot Improvement " form
 - <http://www.metroplanorlando.com/plans/bicycle-and-pedestrian-program/pedestrian-spot-improvement-form>
 - Work with MetroPlan Orlando to identify and secure funding for bicycle and pedestrian improvement projects
 - Seek FDOT and other grants to support to pedestrian safety programming

Programs and Strategies

- Community Targeted Strategies
 - Include pedestrian-safety information in utility bills.
 - Promote pedestrian safety through media
 - Collaborate with Best Foot Forward to conduct proactive campaign
 - Work with Orange County Traffic Engineering to add more LED radar feedback signs to slow drivers at school crossings
 - Orange County to implement 20 systems throughout Orange County in 2015

Programs and Strategies

- Student Targeted Strategies
 - Promote University of Florida pedestrian/bicycling safety program through the OCPS website, <http://www.pedbikesrc.ce.ufl.edu/pedbike/default.asp>
 - Expand district's involvement with the League of American Bicyclists bike and pedestrian safety training for teachers

Programs and Strategies

- Student Targeted Strategies
 - Evolve data collection, analysis and interpretation methods
 - Near-miss study with community partners
 - Promote driver and pedestrian safety outside of normal class time
 - Media Relations will work with FHP to promote content through use of social media
 - Continue mock DUI events at high schools
 - Traffic Safety content during morning announcements
 - Expand SafeKids “Countdown2drive” middle school safety program

Programs and Strategies

- Student Targeted Strategies
 - Continue to promote “No Idling” zones at schools to facilitate traffic and promote a healthy environment
 - Utilize the UCF studies and other assessments develop solutions-based efforts to resolve environmental conditions
 - Create “Parent Tips” cards for school crossing guards to hand out to parents who don’t follow proper procedures

Programs and Strategies

- Student Targeted Strategies
 - Conduct training at parent meetings to change safe-walking culture
 - Coordinate with UCF to increase participation and training for the Walking School Bus program
 - Improve website and social media distribution to promote safe routes to school and provide resources to students
 - Grow the use of the OCPS “YouTube” channel promoting pedestrian safety

Superintendent's Comments

School Board Questions and Discussion