

congrats on welcoming your new *family member!*

By providing daycare and funding charitable initiatives, we help dogs live long, healthy, happy lives with safe socialization, exercise, and education. We hope you'll consider these benefits of daycare and stop by to introduce your new furry family member soon!

FOR YOUR DOG:

- Happier with more BFFs
- Calmer with a consistent routine
- Socialization with other pups
- Increases exercise and improves physical health
- Regular education with consistent canine coaching
- Becomes a more well-rounded canine citizen
- Reduces separation anxiety
- Increases confidence
- Longer life
- Early detection of health concerns

FOR YOU:

- Reliable care (we are the best!)
- Reduces need to entertain after a long workday
- Improves overall relationship with the dog
- Reduces opportunities for household damage due to restless behavior and/or boredom
- Increases confidence in your dog around others
- Reduces potential need for anxiety medications
- Reduces costs and need for behavioral modification programs with trainers
- Improves likelihood of well-balanced lifestyle and long-term relationship with the dog (and fewer surrenders to shelters)
- Potential for early identification of medical issues translates to lower healthcare costs for pet parents

IN PARTNERSHIP WITH



enjoy a *free week* on us as a thank you for saving a life!

Dogtopia of Orlando - Apopka
 2320 E Semoran Blvd • Apopka, FL 32703
 407-995-6337 • apopka@dogtopia.com

Dogtopia of Orlando - East
 3016 N Alafaya Trl, Orlando, FL 32826
 407-848-3818 • orlandoeast@dogtopia.com

Dogtopia of Orlando - Longwood
 1823 W State Road 434 • Longwood, FL 32750
 407-982-5111 • longwood@dogtopia.com

Dogtopia of Orlando - Sanford
 100 N Entrance Rd • Sanford, FL 32771
 407-289-1110 • sanford@dogtopia.com

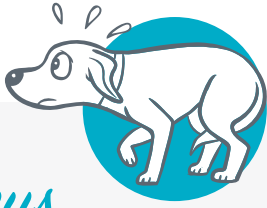
CALL TO SCHEDULE!

Reference our **Adjustment Period After Adoption** **handout** for information on when to socialize your dog!

The soonest I can bring _____ in for a Meet & Greet is ____/____/____.



adjustment period *after adoption*



3 days to decompress

Feels overwhelmed

May feel scared and unsure of what's going on

Not comfortable enough to be themselves

May not want to eat or drink

Shuts down and/or hides under furniture

Tests boundaries



3 weeks to learn your routine

Starts settling in

Feels more comfortable

Realizes this could be home

Figures out their environment

Gets into a routine

Lets their guard down

May begin to show their true personality (behavioral issues may start to appear)



3 months to feel at home

Feels completely comfortable in their new home

Begins to build trust and a true bond

Gains a complete sense of security with new family

Settles into routine

How soon can my new dog begin daycare after adoption?

A dog should adjust at home for **30 days** before coming to play if:

- They're an adult dog (over one year of age) who has recently come from a shelter or large kennel. They need time to decompress after shelter life!
- Your dog has an unknown social or health history.

A dog could be ready for open play within **2-3 weeks** if:

- They're a puppy! Dogs under one year of age (especially under 7 months old) tend to naturally be friendly even if not properly socialized.
- Your dog comes from a setting with a foster parent who knows their temperament.
- Your dog is already familiar with you (for example, they were rehomed by a family or friend). You will most likely know their extensive social history.



*The **3/3/3 Rule** is a general guideline for the adjustment period of a dog after adoption. Every dog is unique and will adjust differently.*

Dogtopia is committed to closely monitoring your dog during this transition time to watch for behavioral changes as they adjust to their new family.